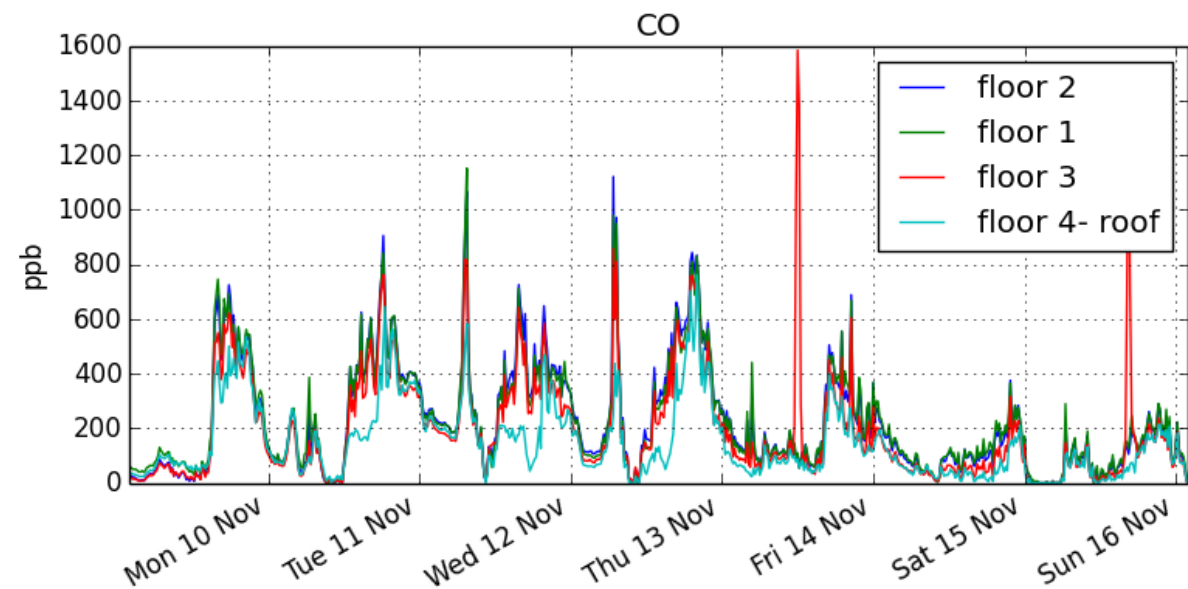
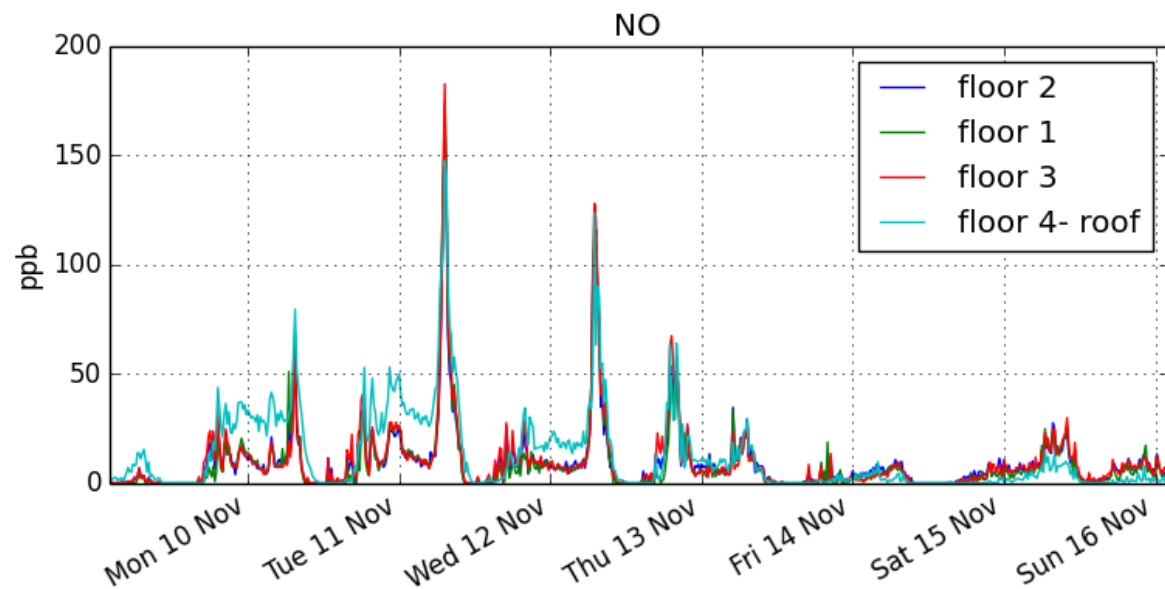
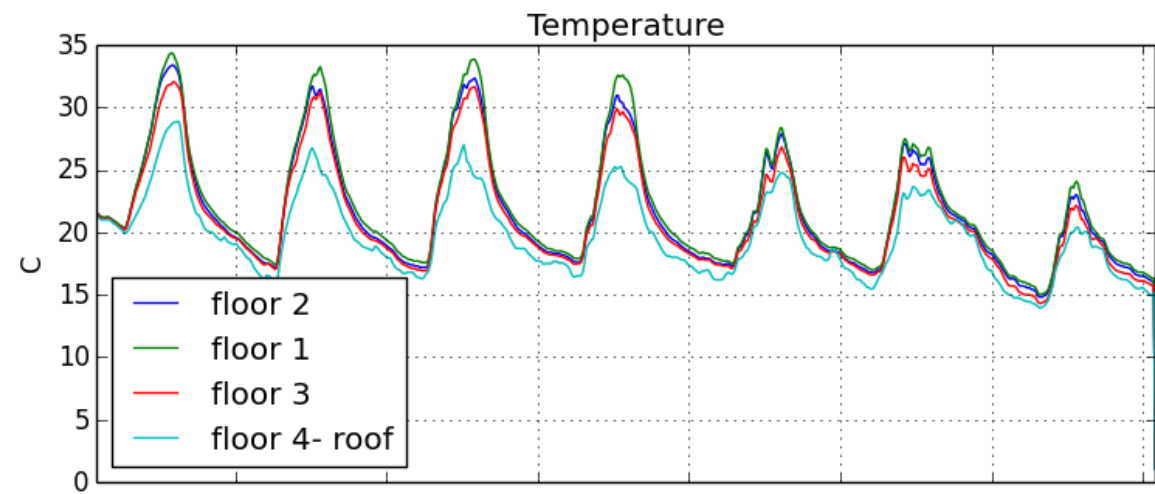
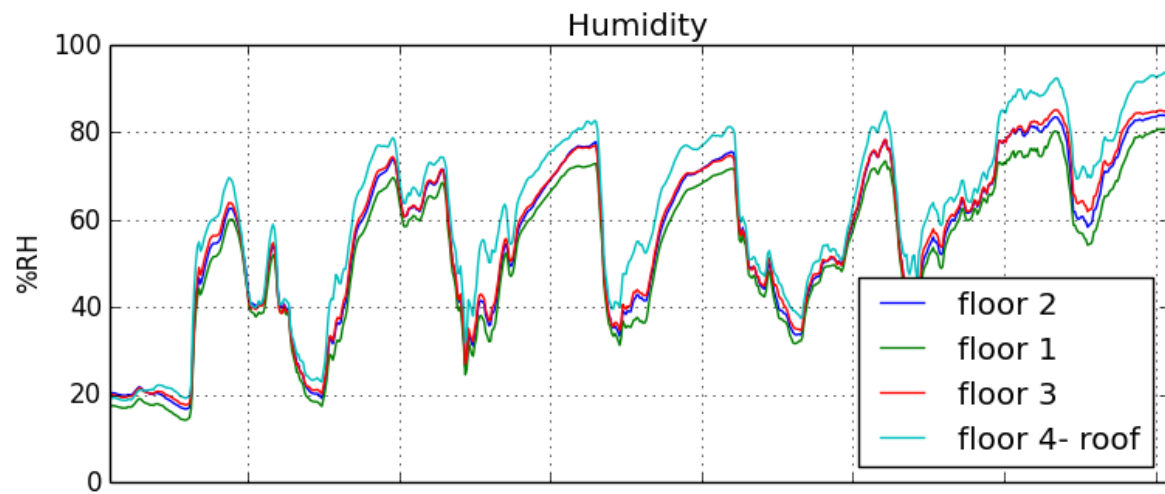
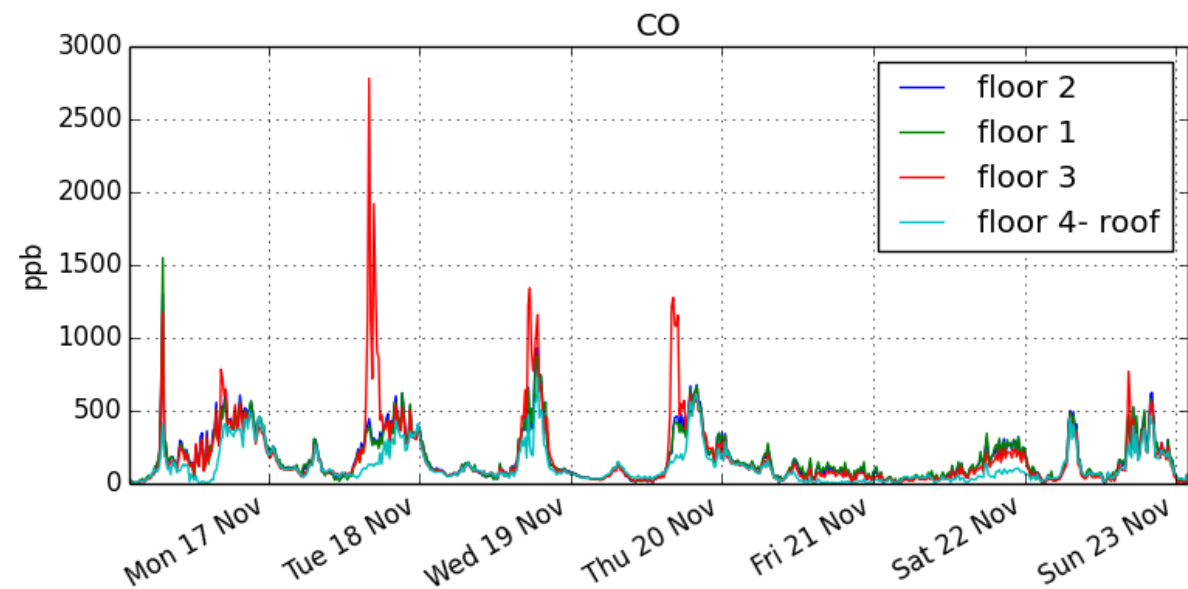
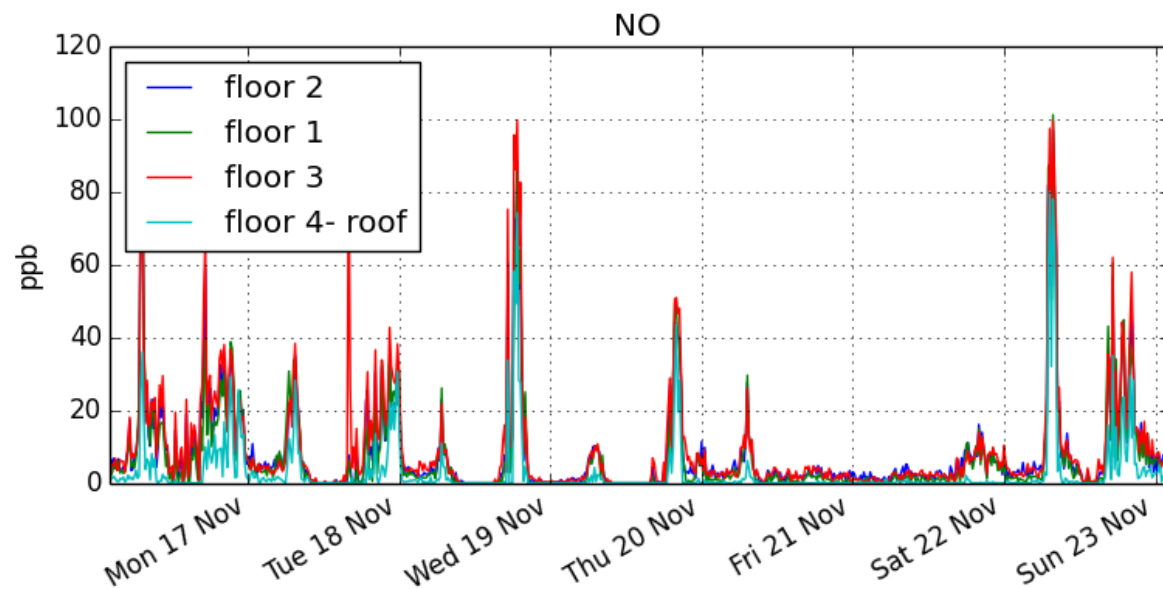
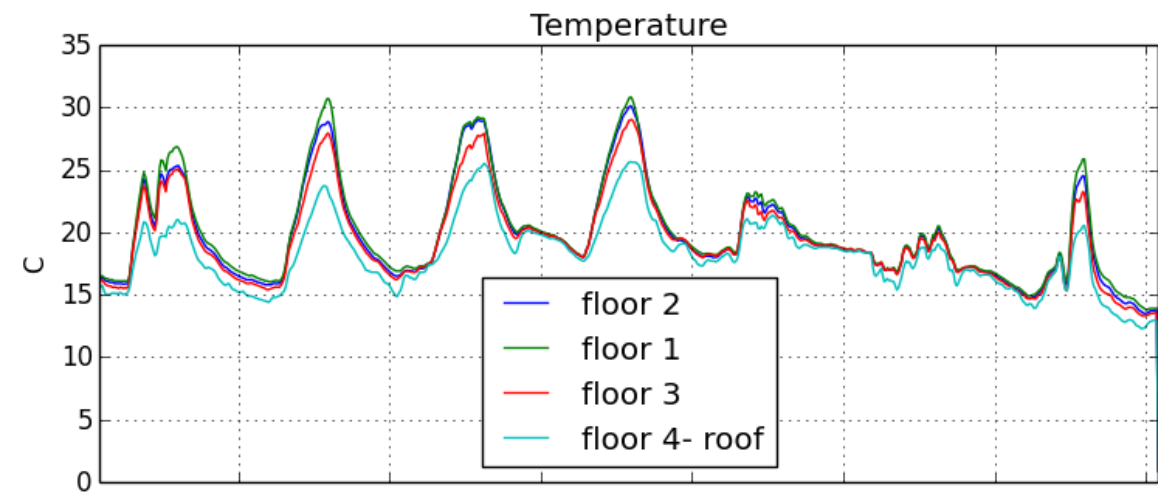
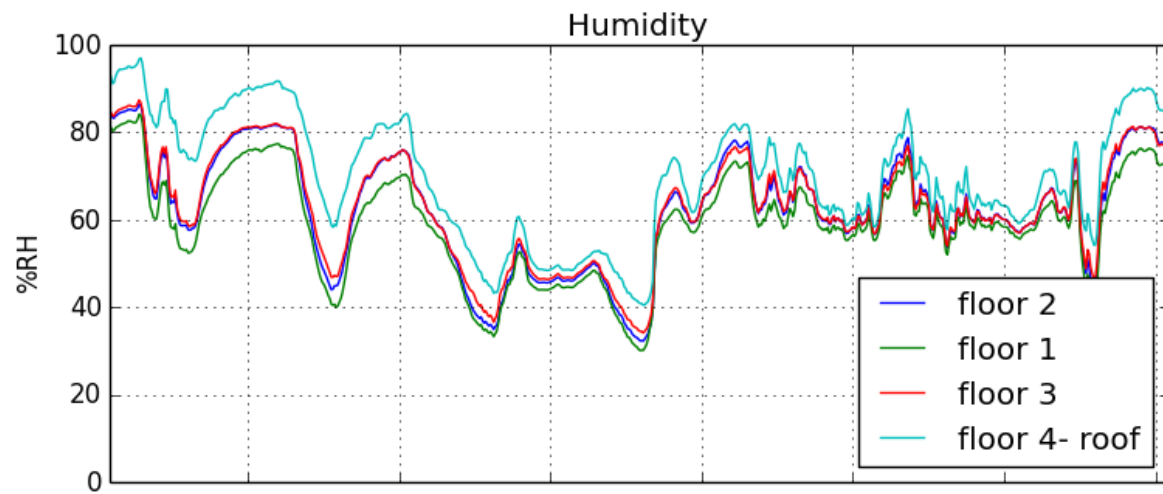


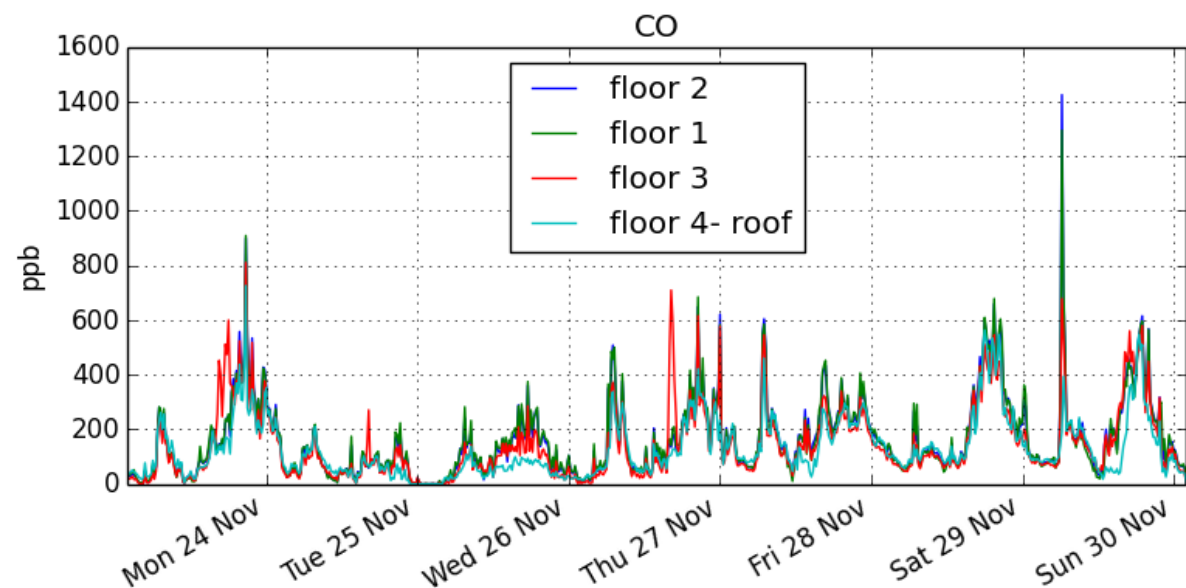
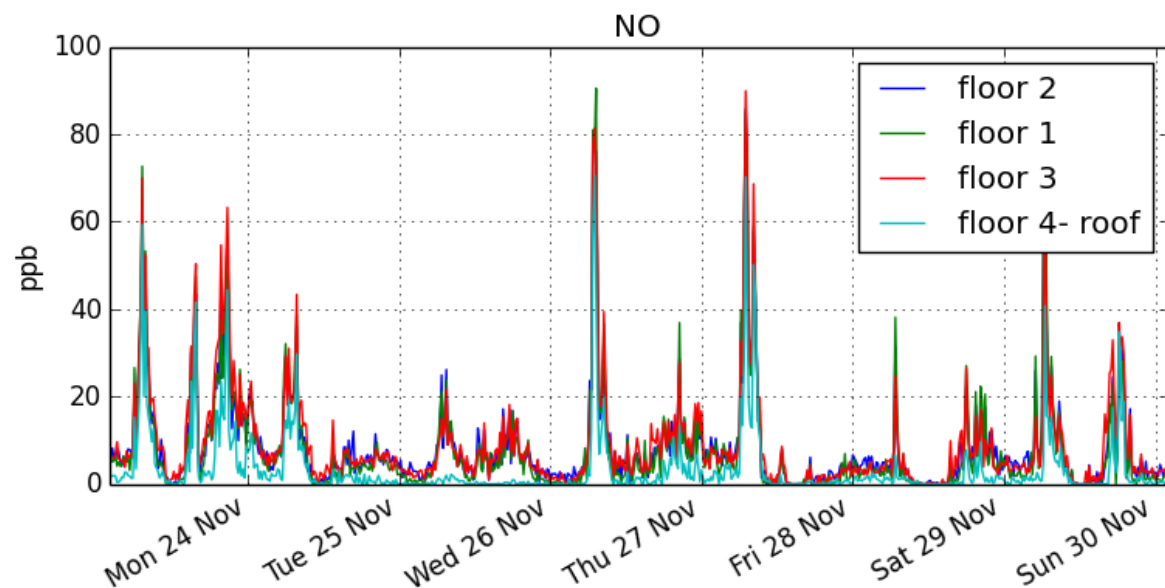
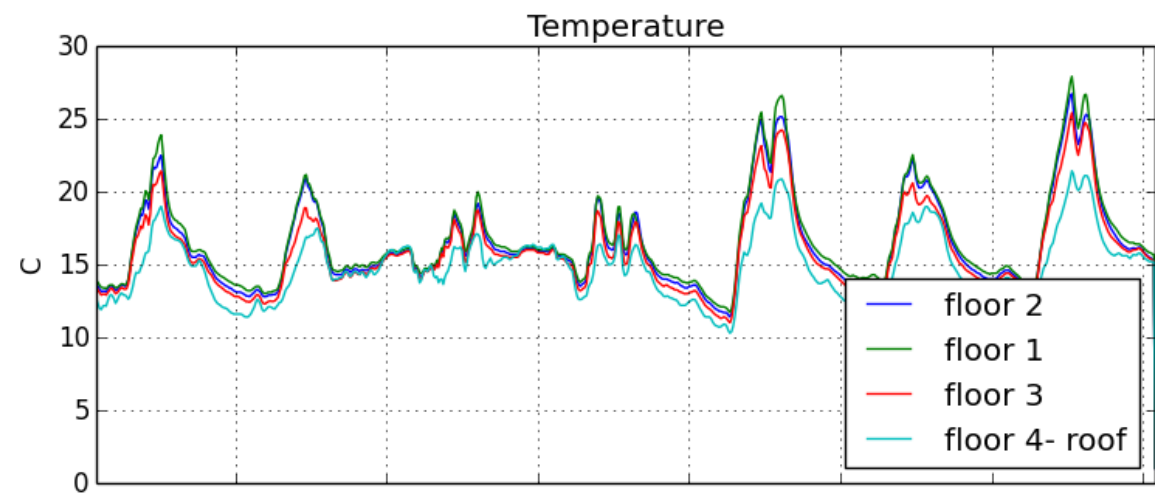
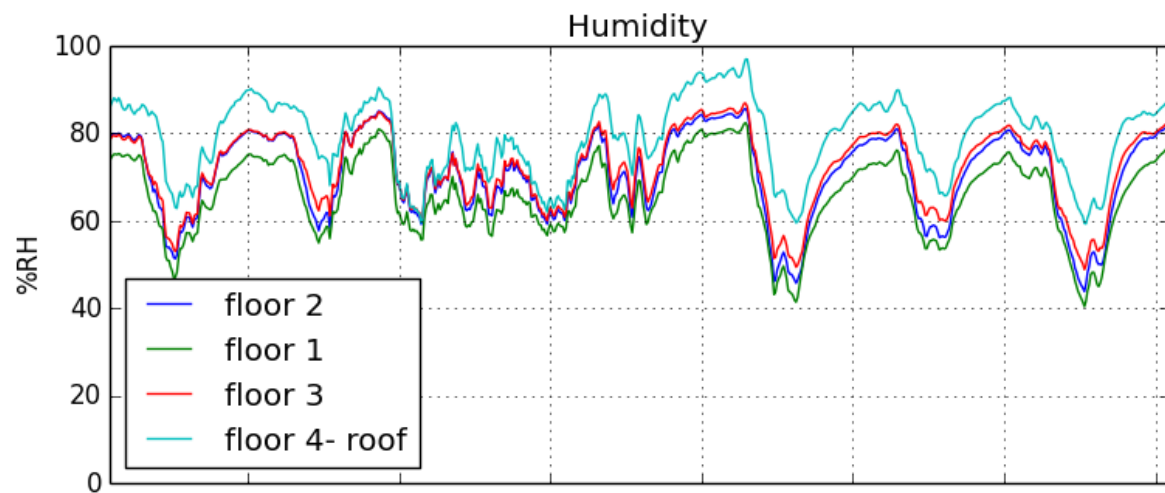
שבוע 1



שבוע 2

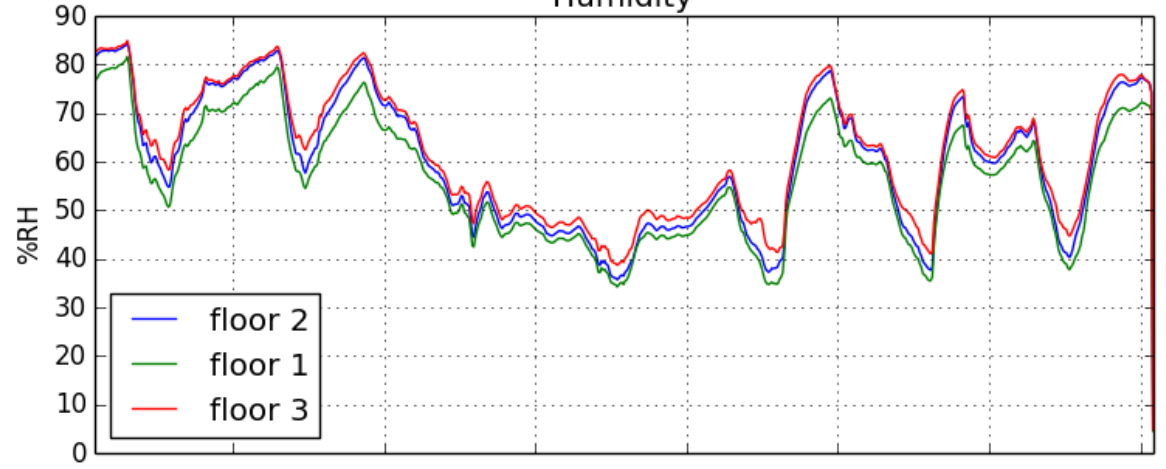


שבוע 3

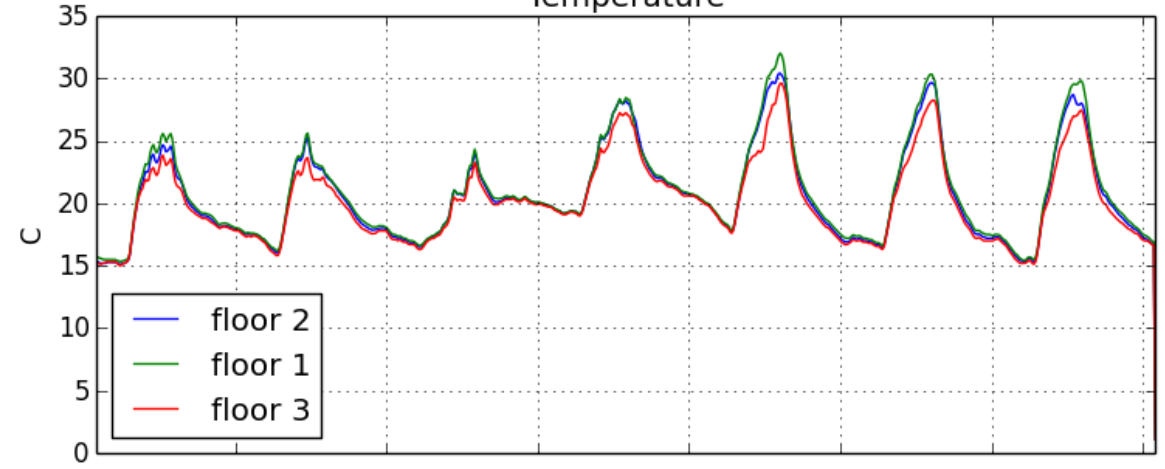


שבוע 4

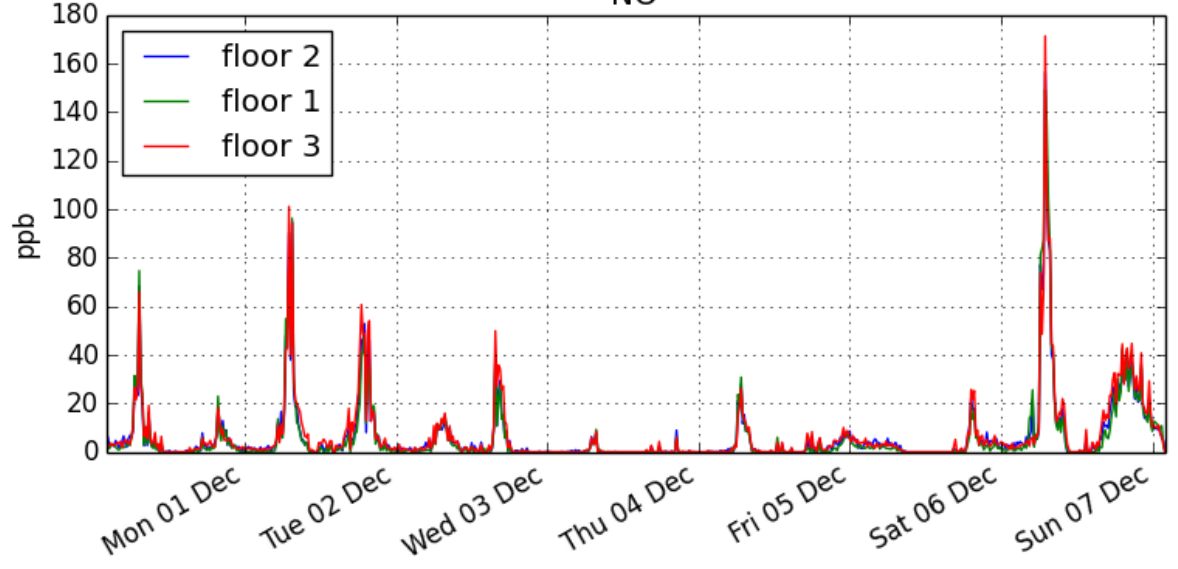
Humidity



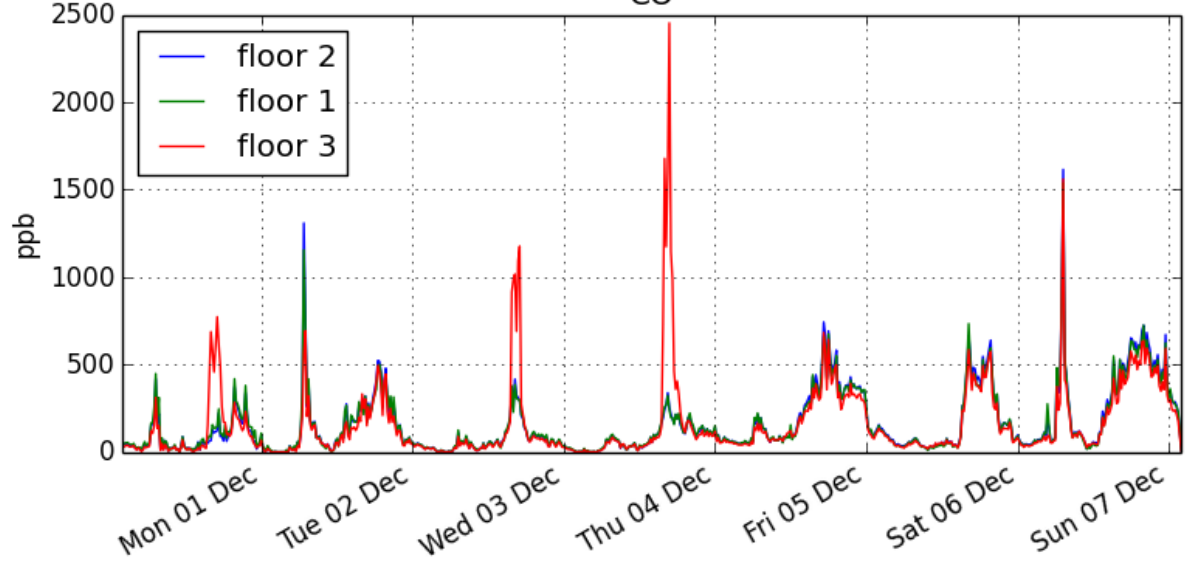
Temperature



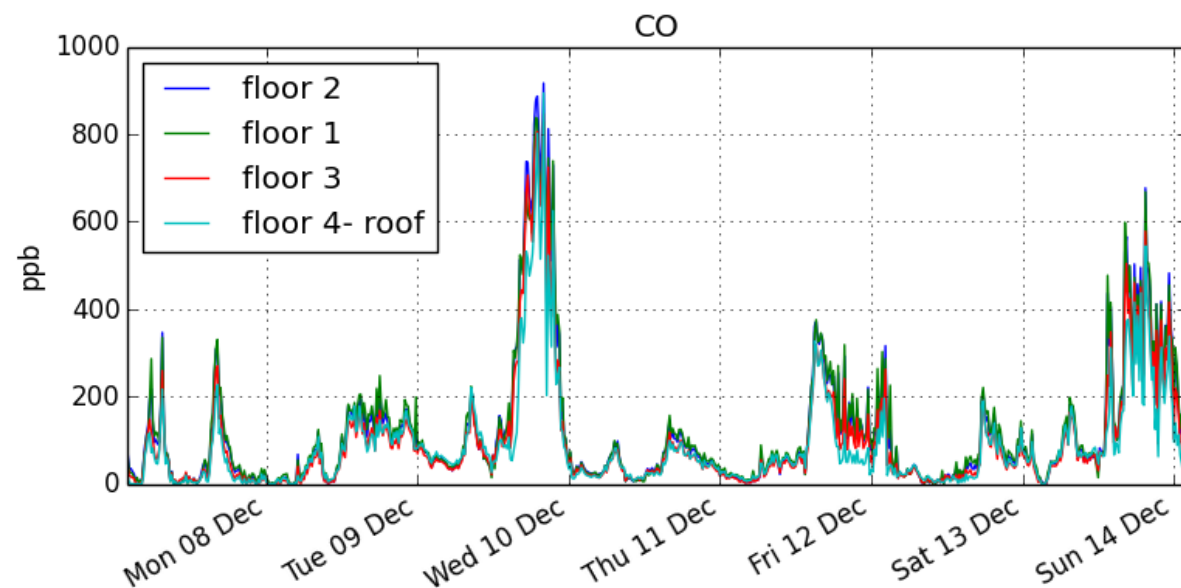
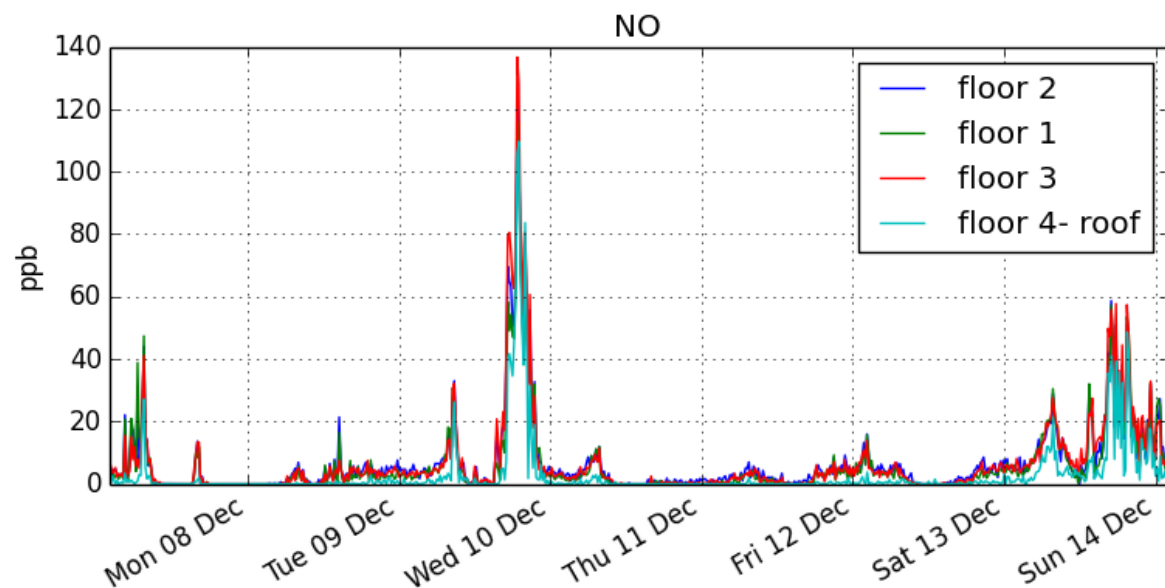
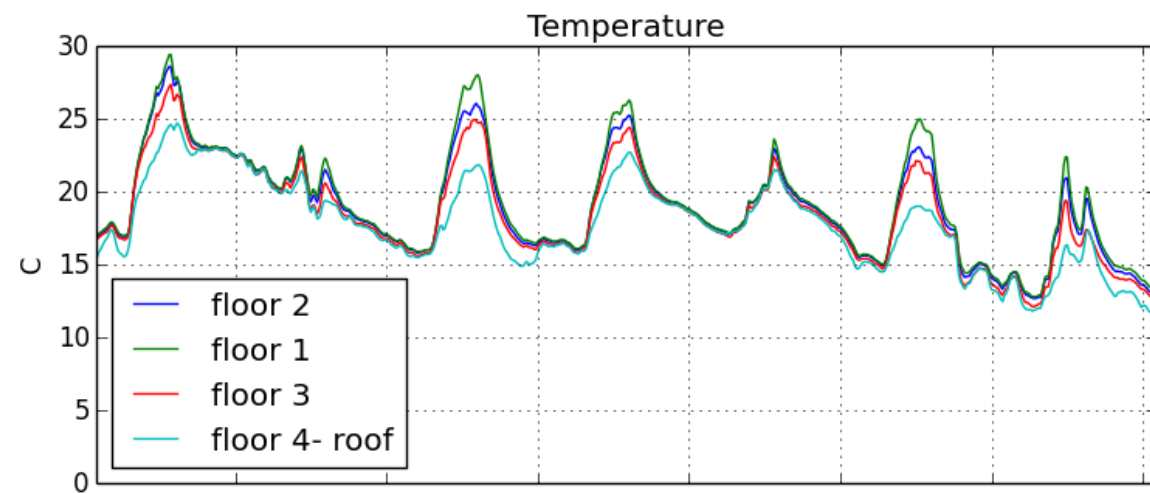
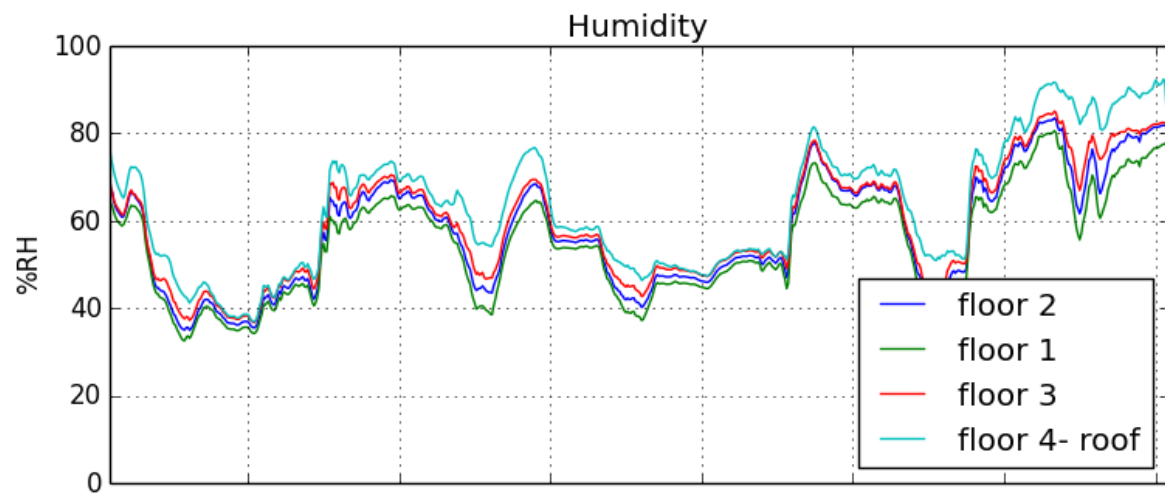
NO



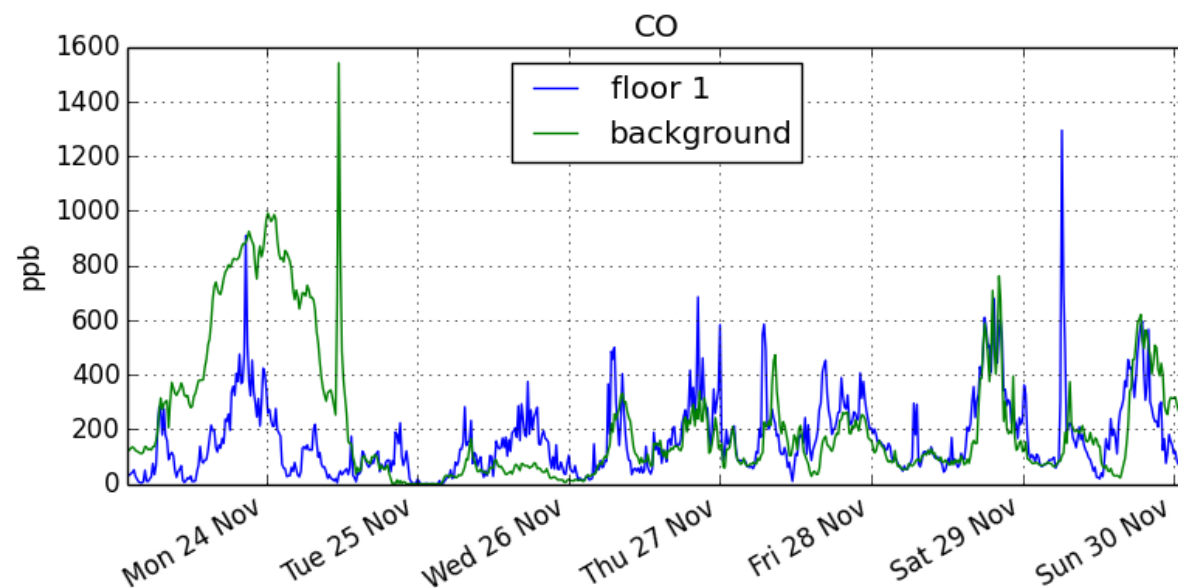
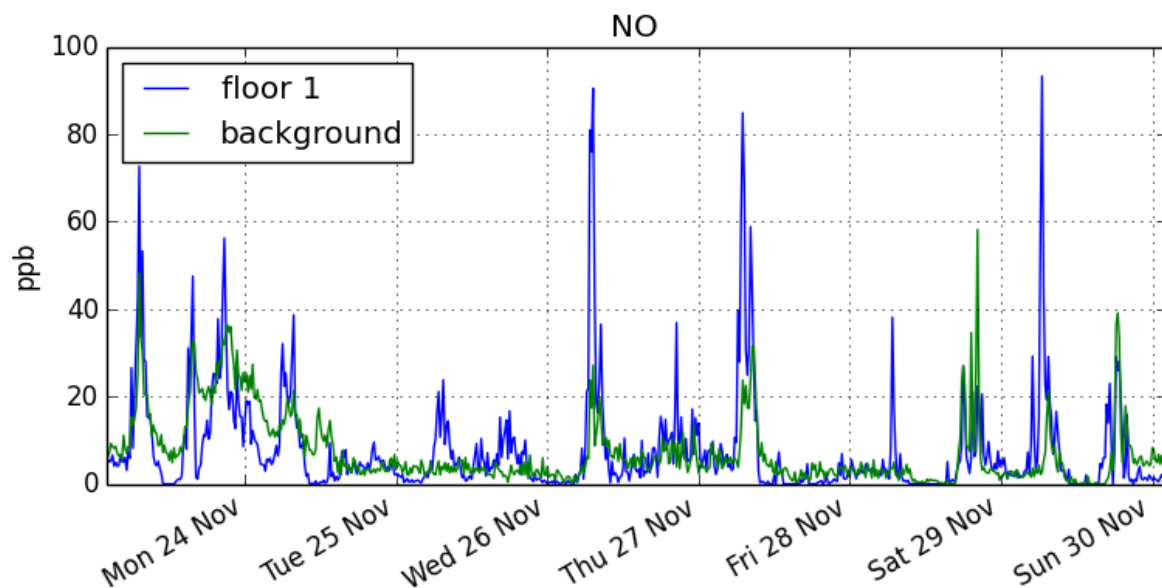
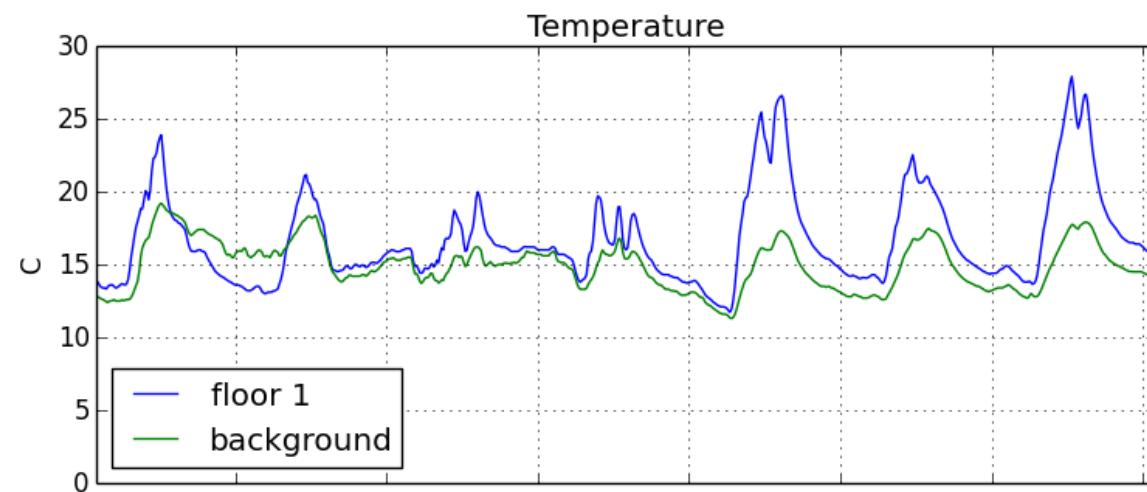
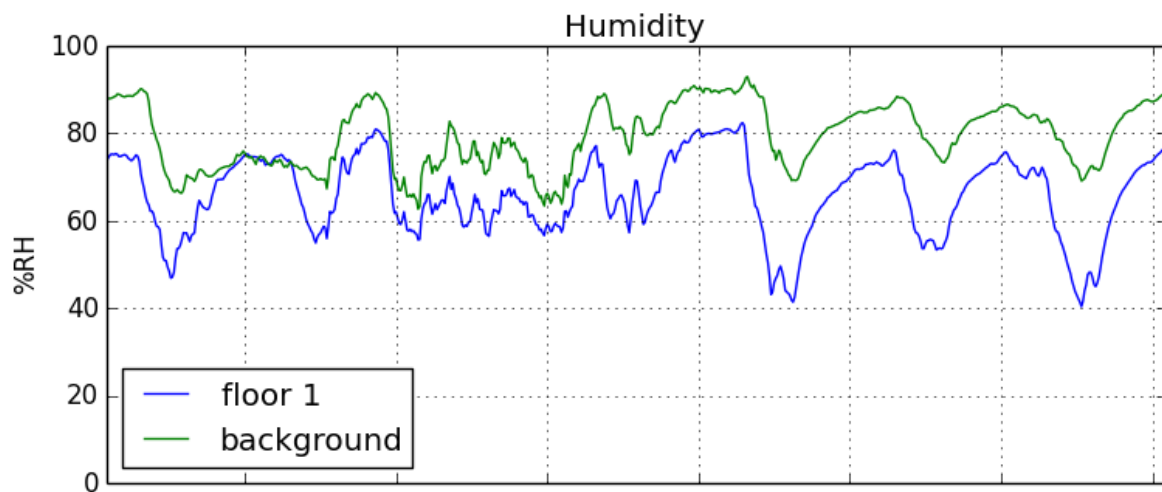
CO



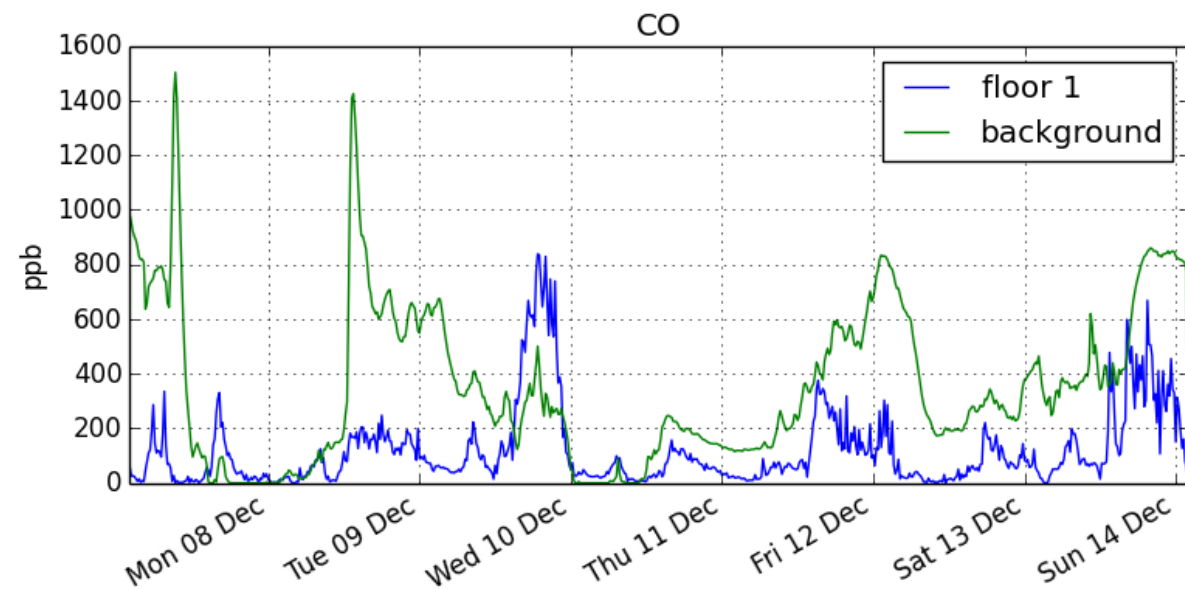
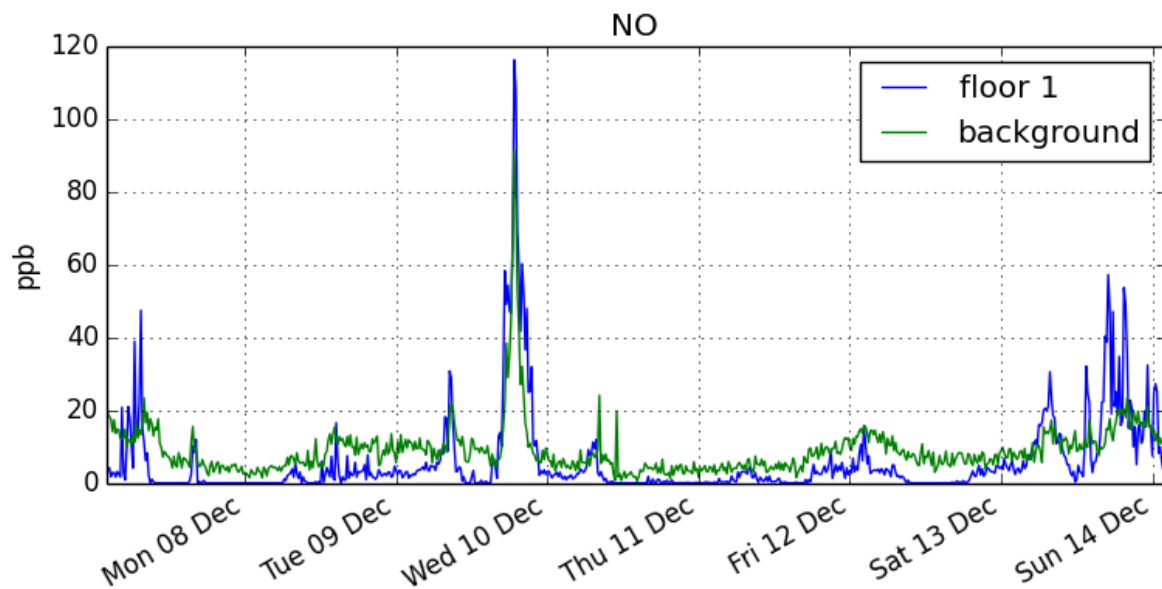
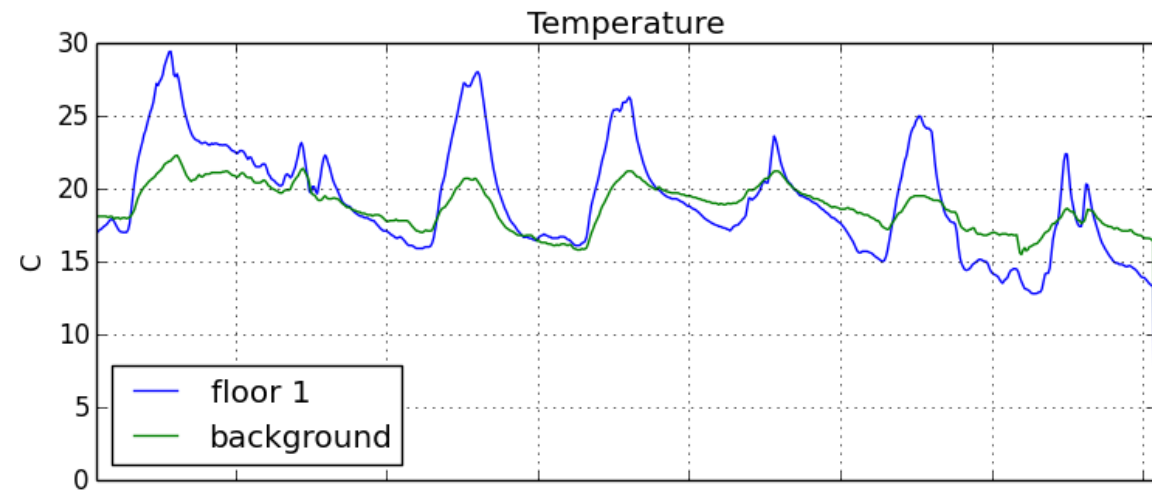
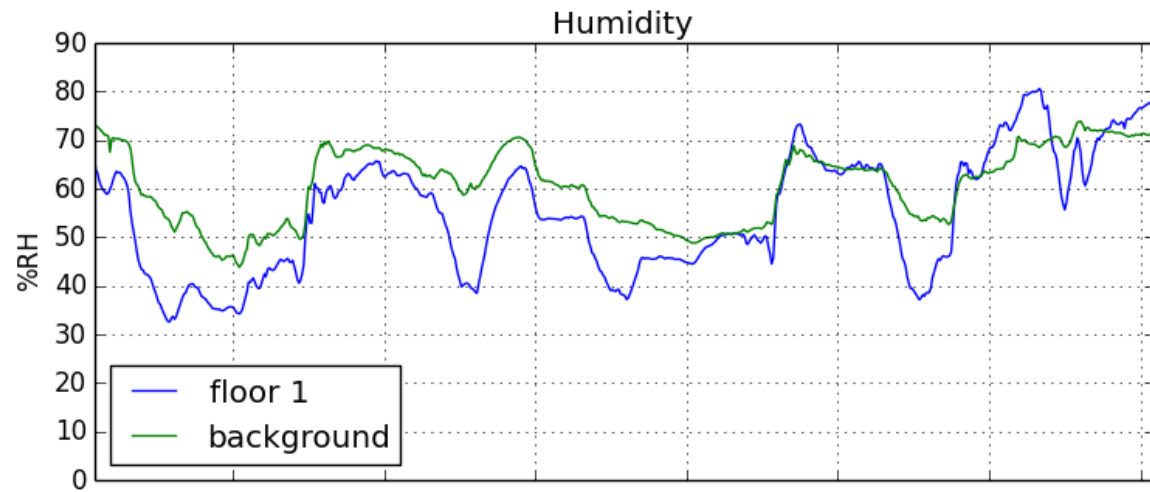
שבוע 5



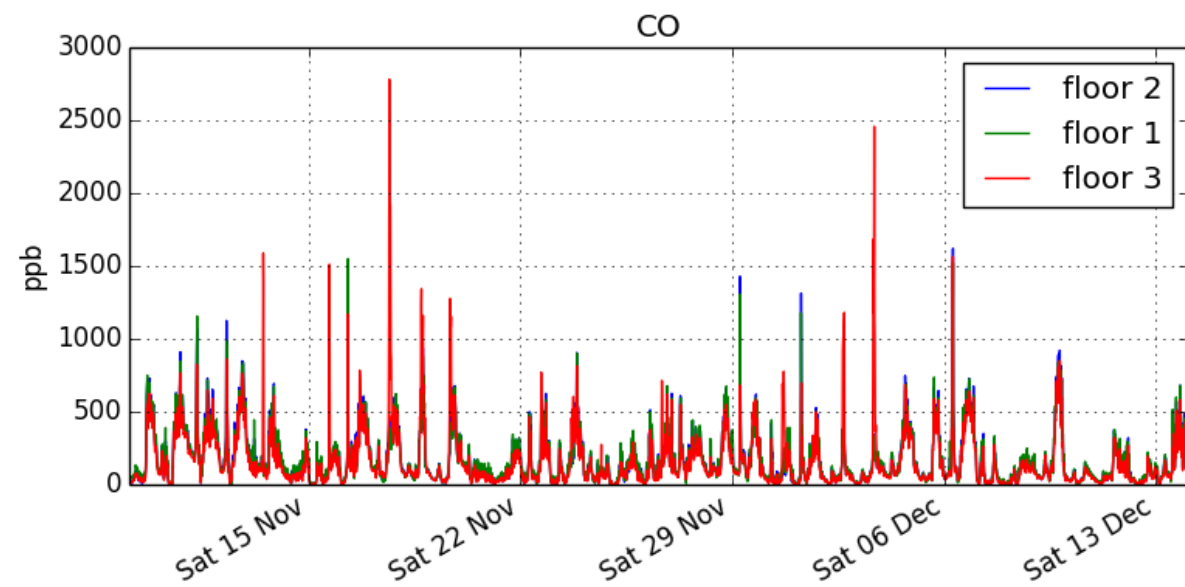
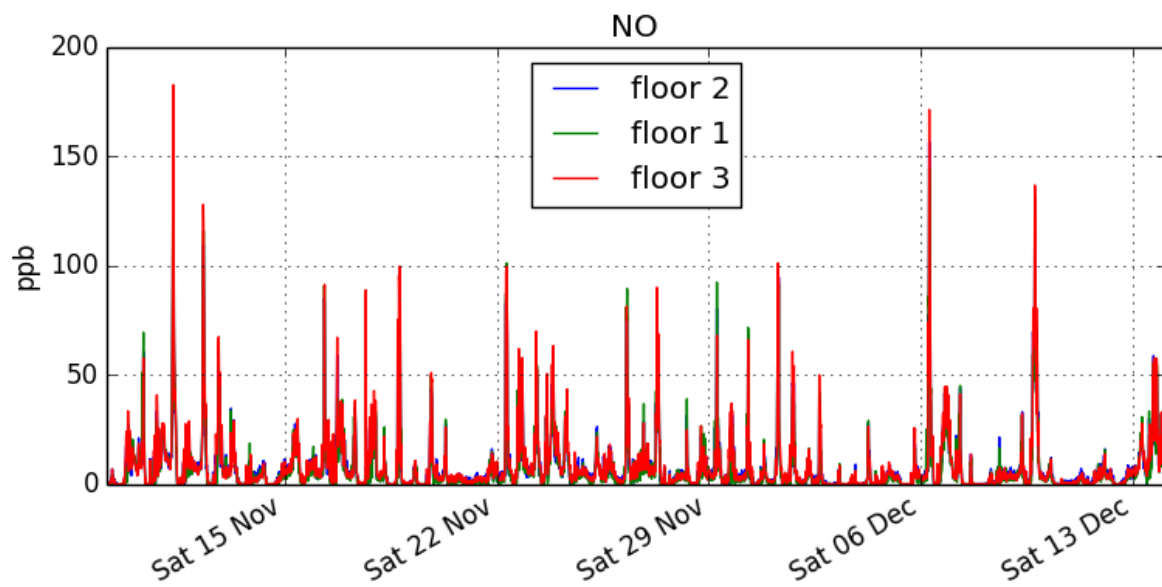
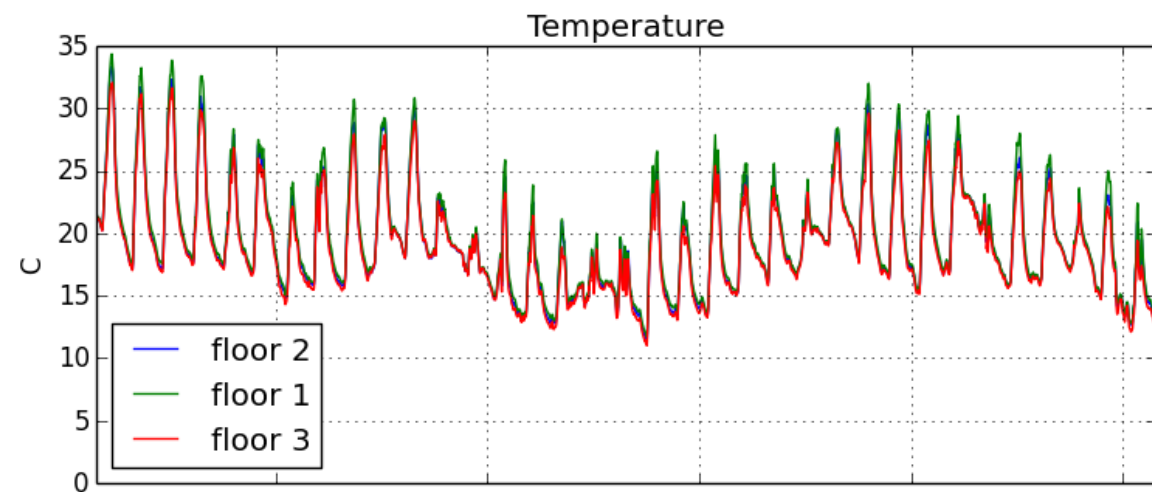
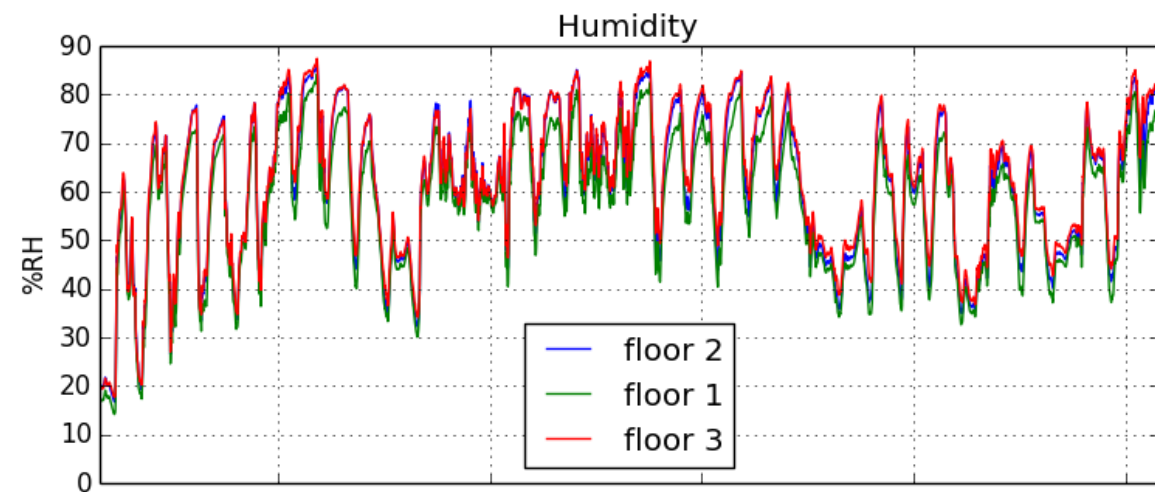
שבוע 3 - רקע



שבוע 5 - רקע



סיכום המישה שבועות



שימו לב-

- הצירים אינם אחידים בכל הגרפים.
- הגרפים נבנו כך שקו המגמה של כל חיישן מתווסף מעל קו המגמה של החיישן הקודם. הדבר עשוי ליצור מצב בו נראה שקו המגמה האחרון שהוסף (החיישן התחתון המקרא) הוא הדומיננטי ביותר. למעשה, אם לא ניתן לראות את הקווים הקודמים - הקריאה שלהם שווה.
- מסיבות טכניות, ישנם נתונים מסוימים החסרים בחלק מהגרפים.
- לקבלת קבצי נתונים גולמיים ניתן ליצור קשר עם מובילי המיזם.